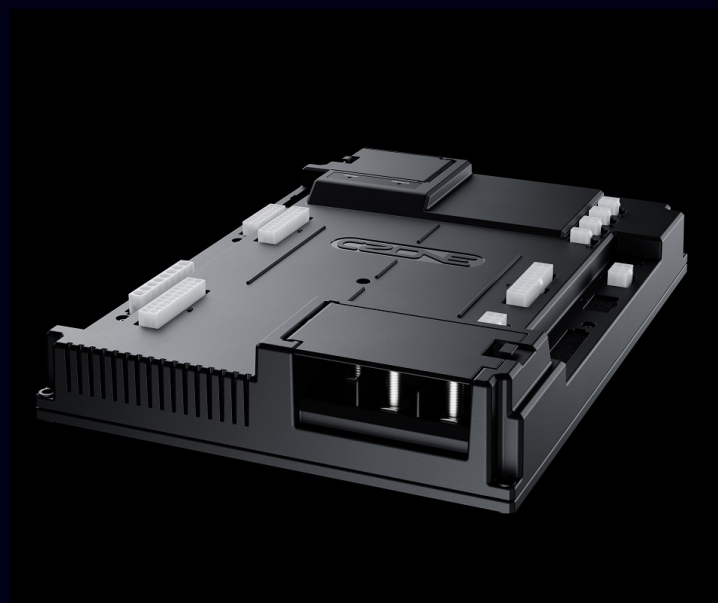




**RV1**

Driving smart technology



[czone.net](http://czone.net)

# RV1

**RV1 is CZone's first dedicated digital switching & integration module for recreational & specialty vehicles**



**RV1 features an impressive 76 input and output channels including 8 reversing motor channels for direct control of slide outs, awnings, shades and leveling systems.**

**RV1 also includes the latest smart switching technology, built-in battery monitoring and multiple network interfaces for seamless 3rd party system integration.**

## FEATURES & BENEFITS

- › 76 channels in a compact enclosure ensures a single module digital switching solution across a wide range of RV and SV's.
- › Smart MOSFET switching technology provides superior reliability, silent operation and current monitoring on all output channels.
- › 8 Reversing Motor (H-Bridge) channels for direct control of slide outs, awnings, shades and leveling systems.
- › Internal Battery State of Charge Monitoring, no additional components required and low power draw on sleep mode (<5mA).
- › RV-C network interface for seamless integration with HVAC's and other 3rd party systems.

## ADDITIONAL FEATURES

- › 32 Signal Inputs for 0-32V and 0-1000Ω sensors & switches. Display values as Tank, Battery Volt, Temperature or Pressure levels.
- › Cost effective Molex/TE automotive connectors with multiple cable routing options to suit various install locations and space availability.
- › Auto Generator Start and load shedding functions can be configured to maximize battery runtime and protect batteries from deep discharge
- › USB port for full system firmware & config updates (no PC or adapters required)
- › Automatic Climate Control feature allows direct control of HVAC & Heating systems with intuitive Climate Controls on CZone Displays

## PART NUMBERS

80-911-0221-00	CZONE RV1
80-911-0225-00	CZONE RV1 CONNECTOR KIT

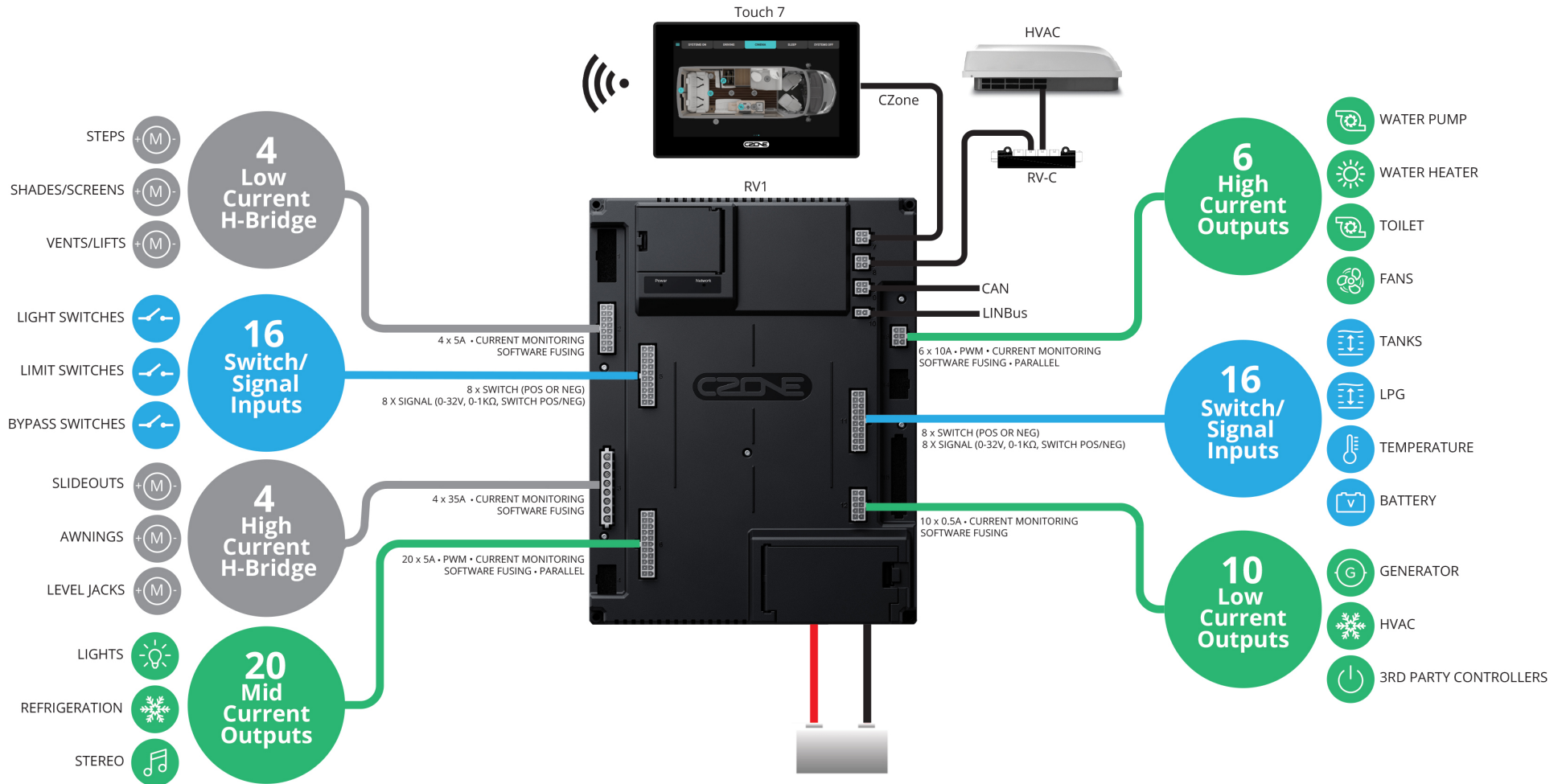
## SPECIFICATIONS

<b>Output channels</b>	36 (6 x 10A, 20 x 5A, 10 x 0.5A)	<b>Maximum module current</b>	150A
<b>H-Bridge channels</b>	8 (4 x 35A, 4 x 5A)	<b>Power consumption max</b>	350mA
<b>Input channels</b>	16 x switch input (Pos or Neg) 16 x sensor inputs (0-32 Volt, 0-1000Ω, Pos or Neg Switch)	<b>Power consumption sleep</b>	<5mA
<b>PWM</b>	All 10A, 5A & H-Bridge Outputs	<b>Communication</b>	NMEA 2000, RV-C, Linbus (Future)
<b>Additional monitoring</b>	1 x Volt, Amps & SOC sense on Main Stud	<b>Operating temperature range</b>	-15C to +55C (-5F to +131F)
<b>Circuit protection</b>	Software configurable fuse	<b>Storage temperature range</b>	-40C to +85C (-5F to +131F)
<b>Current monitoring</b>	All outputs including low & run current detection	<b>Dimensions W x H x D</b>	233 x 307 x 58mm (9.17 x 12.09 x 2.28")
<b>Operating voltage</b>	9-32V (with Power Available LED)	<b>Weight</b>	1.4kg (3lb)
		<b>Compliance</b>	CE, RCM, UK-CA

## DIMENSIONS



# SYSTEM EXAMPLE





[czone.net](http://czone.net)